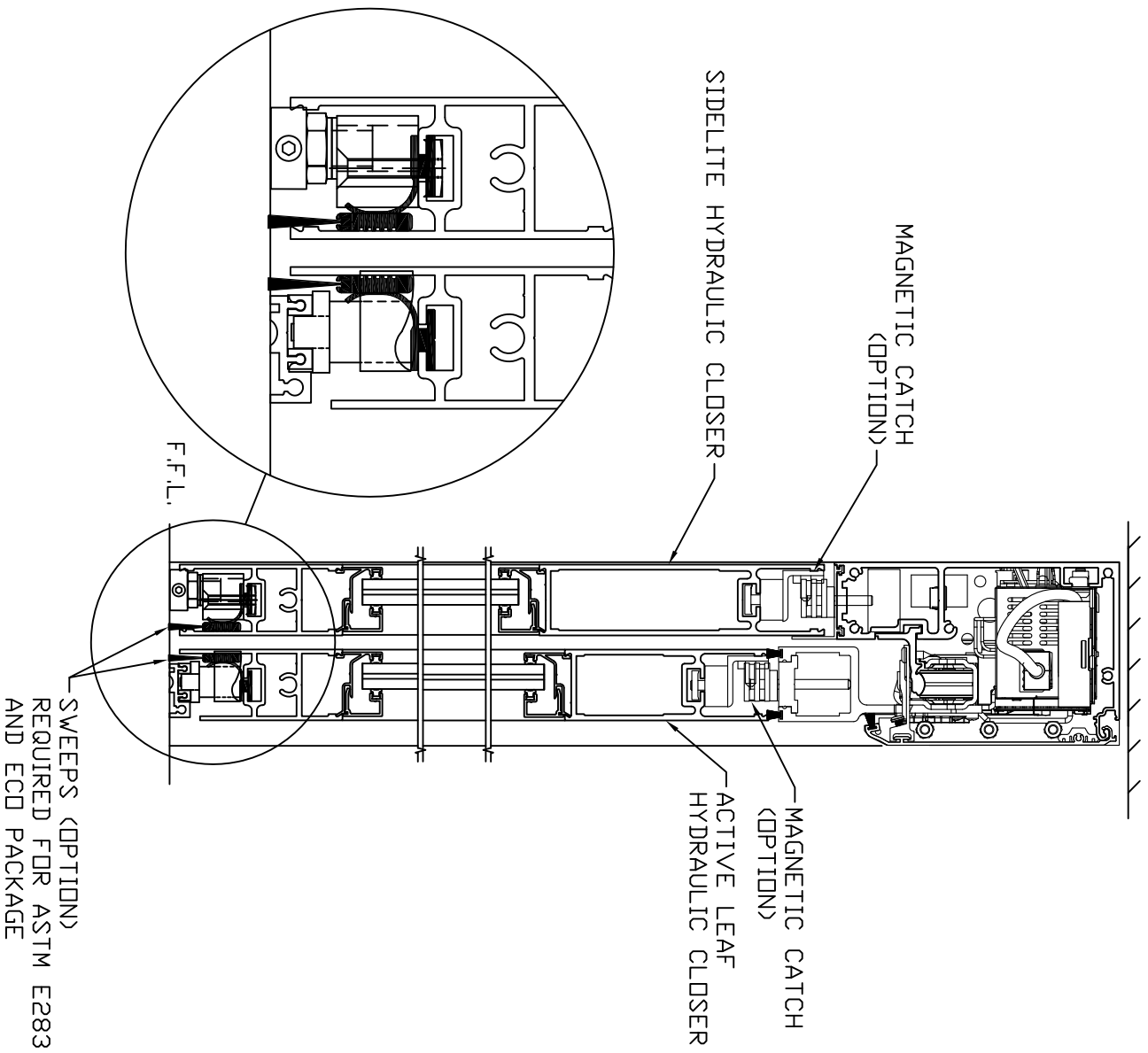
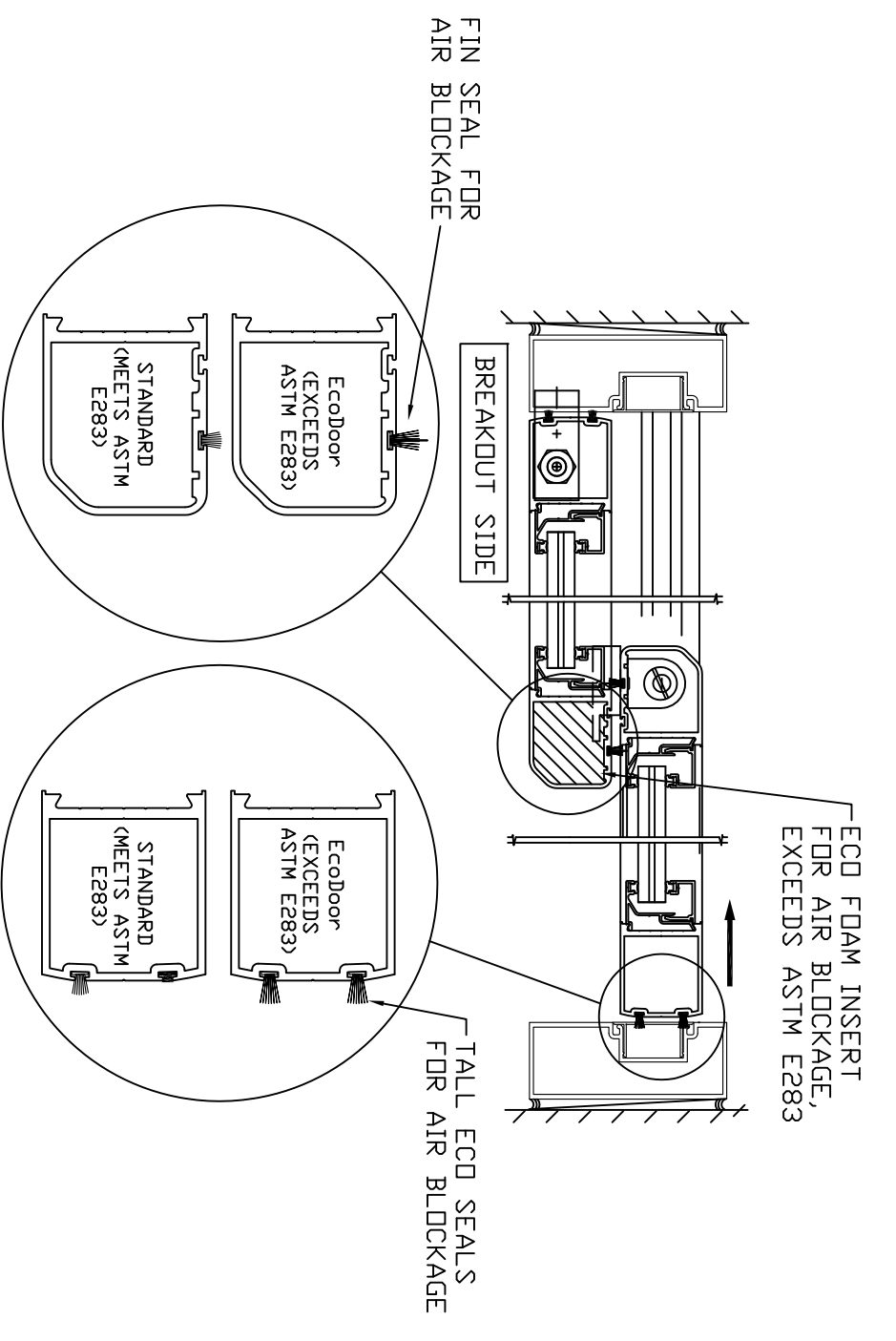


BESAM SL500 Ecodoor OVERHEAD CONCEALED SLIDING DOOR SYSTEM



FBD SHOWN



NOTE: THE STANDARD PACKAGE CONSISTS OF: THE AUTOMATIC OPERATOR & WEATHERSTRIP, FRAMES, DOORS & SIDELITES WITH VERTICAL WEATHERSTRIP, EMERGENCY BREAKAWAY & 2-POINT LOCK. OPTIONAL 5 OR 3 POSITION SWITCH (OFF-EXIT ONLY-AUTO-REDUCED OPENING-HOLD OPEN OR, OFF, AUTO, HOLD OPEN), MOTION/PRESENCE SENSORS, STD CLASS 1 ANODIZED FINISH: CLEAR- AA-M12C22A31, .010 MM, DARK BRONZE- AA-M12C22A44, .018 MM. SPECIAL FINISHES ARE AVAILABLE. THIS PACKAGE WILL ACCEPT UP TO 1' (25.4) INSULATED GLASS BESAM SL500 ECODOOR OPTIONS (CHOOSE ANY OF THE FOLLOWING): ECODOOR SEALS WITH CONCEALED SWEEPS, MAGNETIC CATCHES, HYDRAULIC CLOSERS WITH MAGNETIC CATCHES ECD SEALS EXCEED ASTM E283 REQUIREMENTS BY REDUCING AIR FLOW BY APPROXIMATELY 40%.

DWG NO. 1010545	
DRN BY CLW	DATE 3/21/13
CHK BY	DATE
REV 3.0	DATE 8/31/16