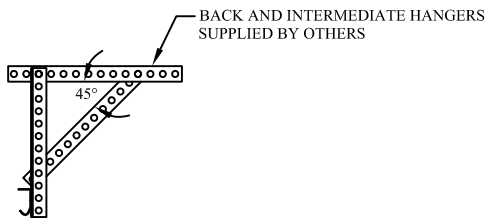
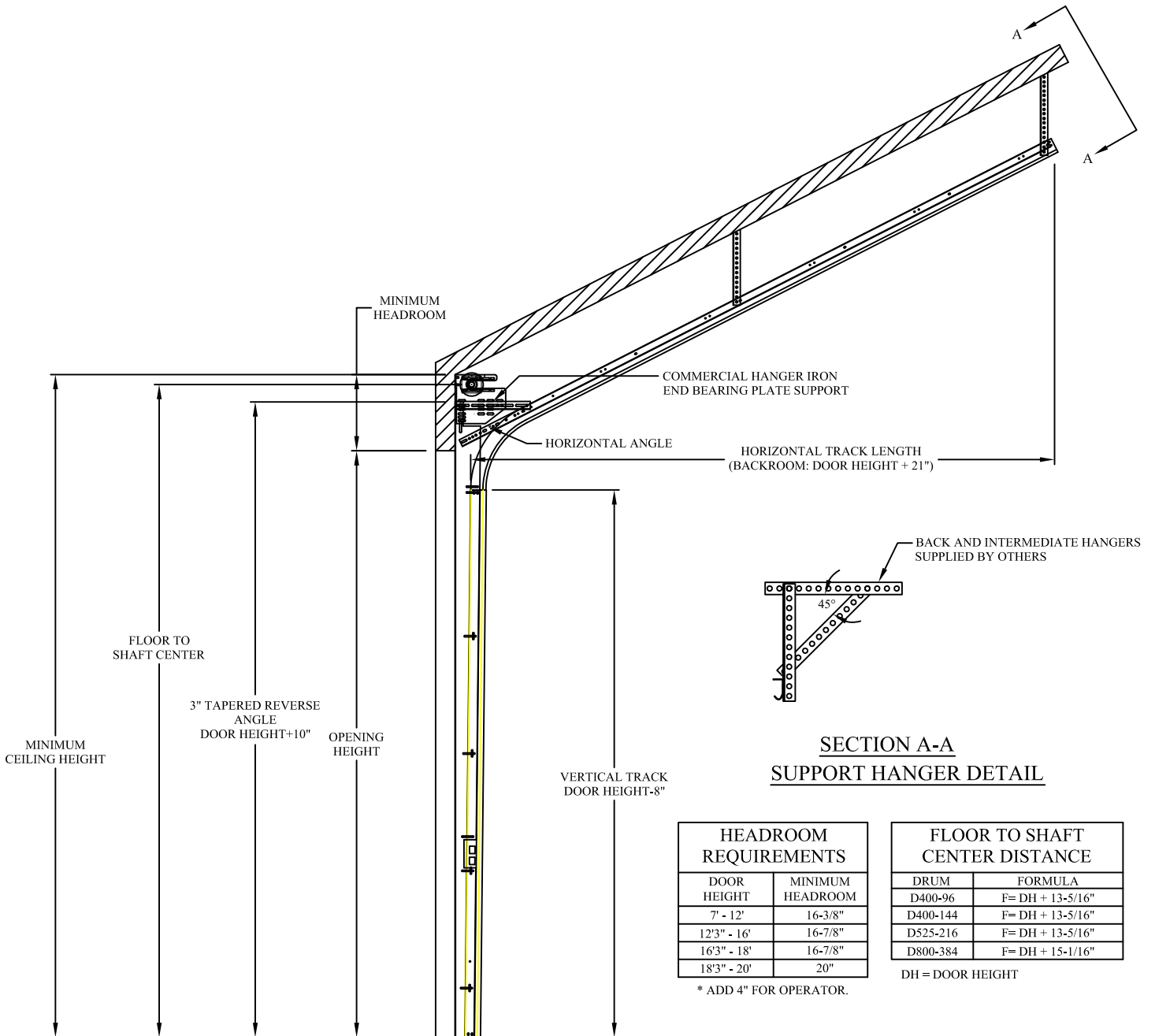


**COMMERCIAL TAPERED REVERSE ANGLE MOUNT
STANDARD LIFT WITH FOLLOW THE ROOF PITCH**



**SECTION A-A
SUPPORT HANGER DETAIL**

HEADROOM REQUIREMENTS	
DOOR HEIGHT	MINIMUM HEADROOM
7' - 12'	16-3/8"
12'3" - 16'	16-7/8"
16'3" - 18'	16-7/8"
18'3" - 20'	20"

* ADD 4" FOR OPERATOR.

FLOOR TO SHAFT CENTER DISTANCE	
DRUM	FORMULA
D400-96	F= DH + 13-5/16"
D400-144	F= DH + 13-5/16"
D525-216	F= DH + 13-5/16"
D800-384	F= DH + 15-1/16"

DH = DOOR HEIGHT

NOTE: CONTACT ENGINEERING DEPARTMENT FOR HORIZONTAL TRACK PITCH CUTTING INSTRUCTIONS.

**STANDARD LIFT FOLLOW THE ROOF PITCH
TAPERED REVERSE ANGLE MOUNT TRACK SET DETAIL**