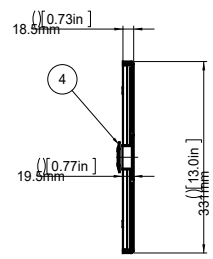
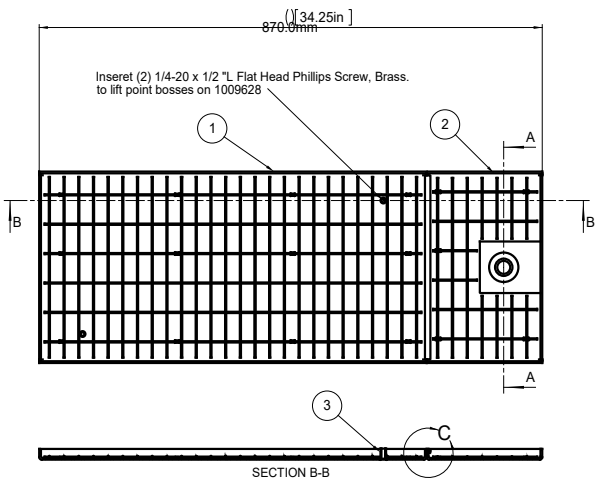
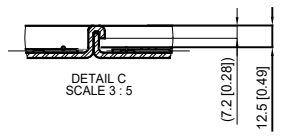


No.	Change	CM.No.	Done	Date
1.0	LOGO CHANGED		SS	
2.0	ADDED 12.5mm DIM to Detail C	17-634	MM	



NOTE:
 1: PROVIDED AS KIT WITH INDICATED HARDWARE & LOOSE ITEM 4
 2: SEE DETAIL PRINTS FOR MATERIAL REQUIREMENT



4	1	pcs.	Escutcheon, Safety SW200	1010096	SHIPPED LOOSE WITH KIT	
3	2			-	PEM Blind Insert # CSOS-0420-12 or Equivalent	
2	1	pcs.	Terrazzo Pan, Output End SW200	1009662		
1	1	pcs.	Terrazzo Pan, Large SW200	1009628		
Pos.		Qty.	Unit	Description	Art.no.	Remark
Surface treatment				Material		Remark
				Assembly		
General tolerance			Proj. method	Scale	Drawn	Date
ISO 2768				1:5	BNC/MVE	Draft
- C			Description		Rev.	Size
ASSA ABLOY			Terrazzo Pan Assembly		2.0	A3
ASSA ABLOY Entrance Systems AS			ASSA ABLOY SW200-IG		Sheet	1 (1)
					Drawing No.	1009730

© All rights reserved. All rights are the property of ASSA ABLOY Entrance Systems AB. No part of this publication may be reproduced, stored in a retrieval system, or transmitted, in any form or by any means, without the prior written consent of ASSA ABLOY Entrance Systems AB.