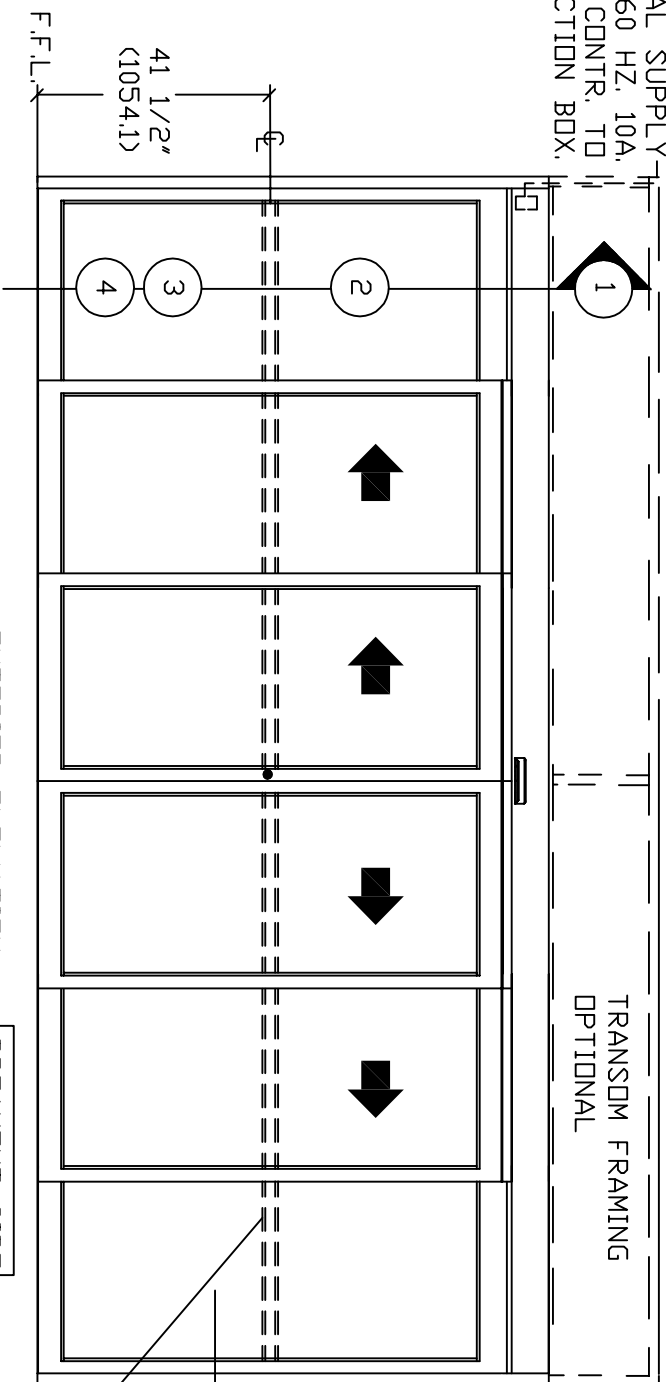
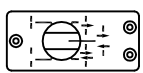


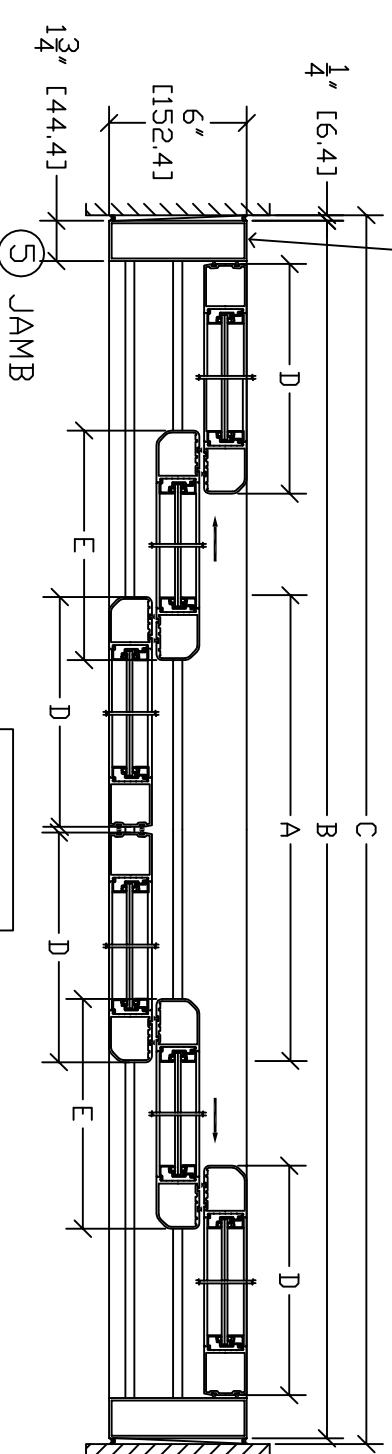
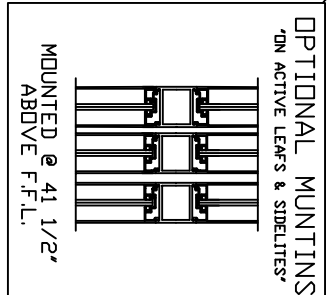
ELECTRICAL SUPPLY
110 VAC, 60 HZ, 10A,
BY ELEC. CONTR. TO
JUNCTION BOX.



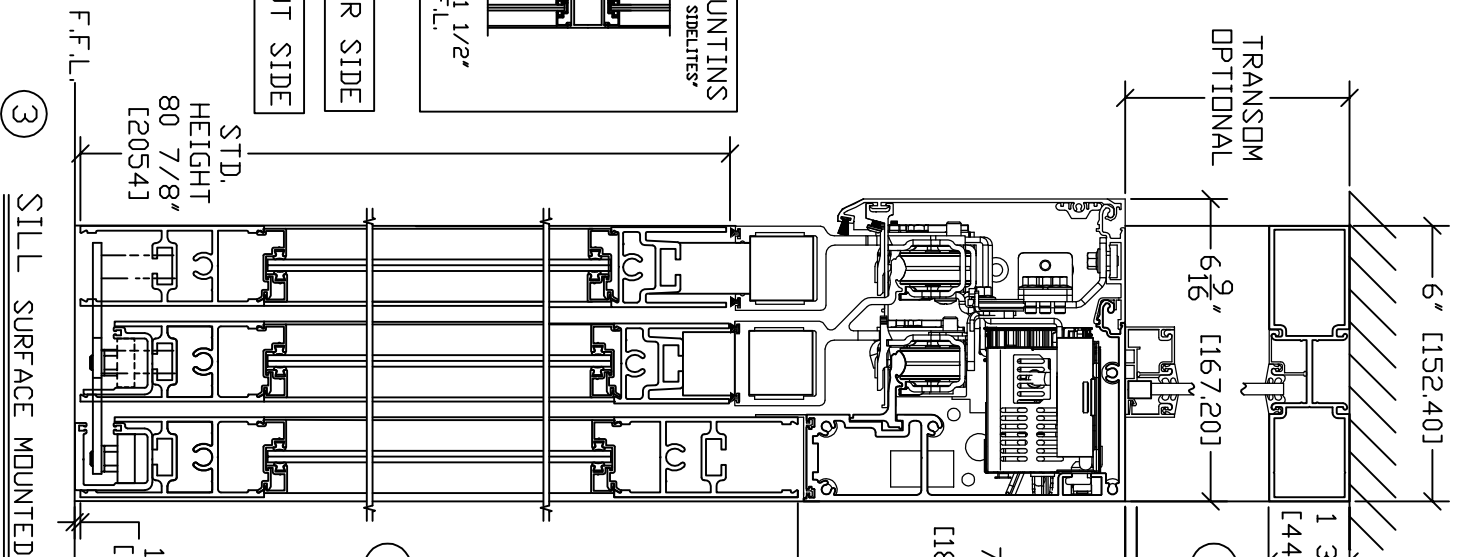
Optional Factory Prep
Switch Location @
74-1/2"H



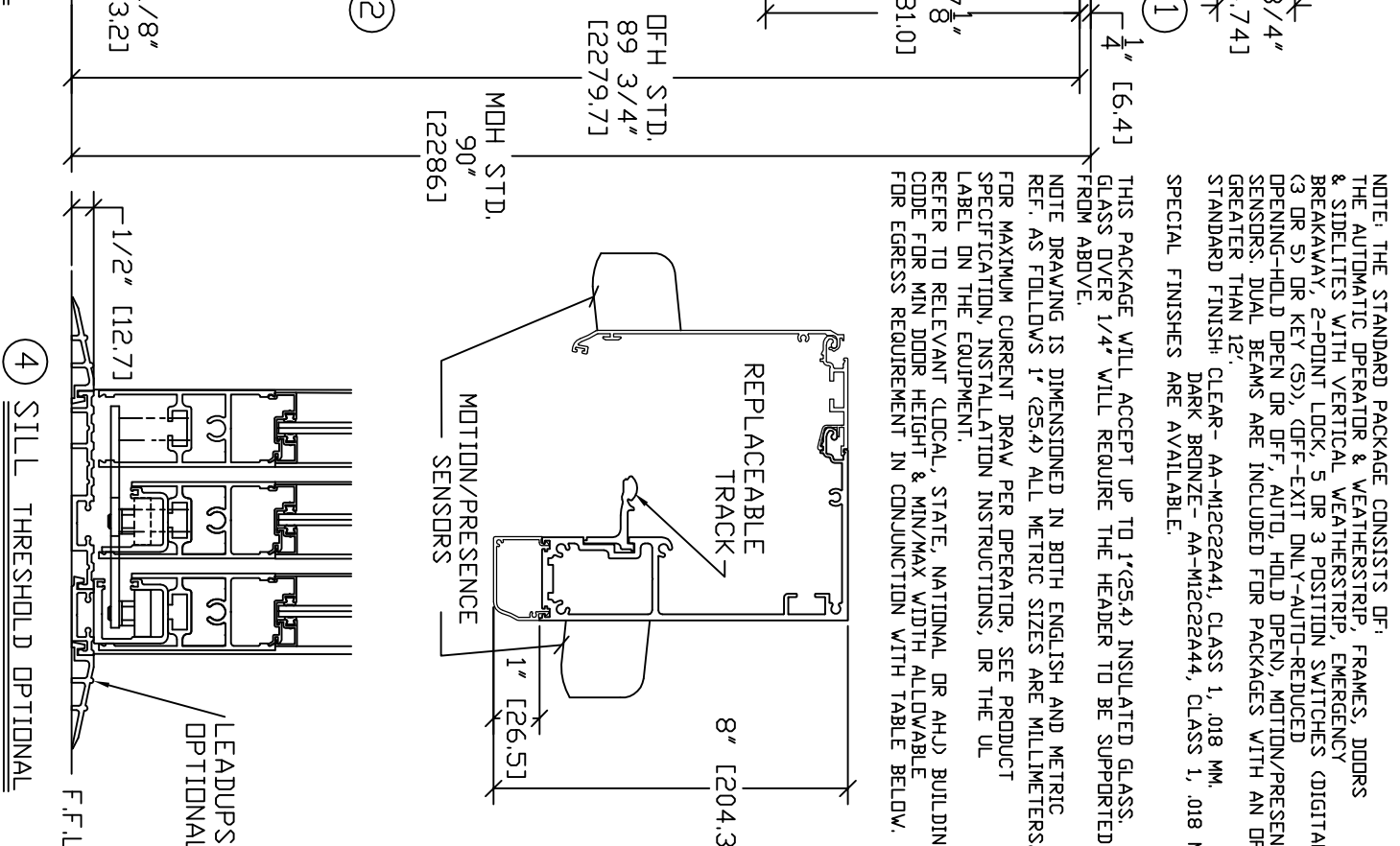
Optional Factory Prep
Switch Location @
74-1/2"H



COVER SIDE
BREAKOUT SIDE



COVER SIDE
BREAKOUT SIDE



COVER SIDE
BREAKOUT SIDE

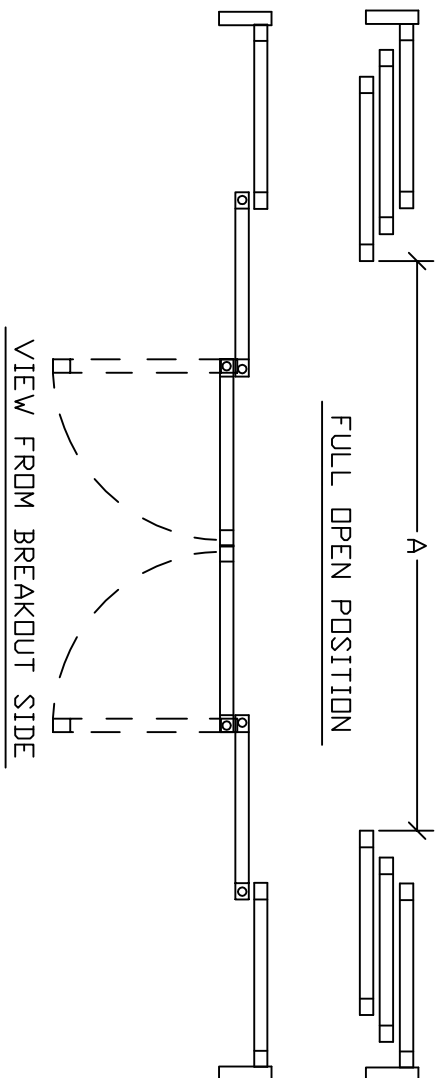
NOTE: THE STANDARD PACKAGE CONSISTS OF: THE AUTOMATIC OPERATOR & WEATHERSTRIP, FRAMES, DOORS & SIDELITES WITH VERTICAL WEATHERSTRIP, EMERGENCY BREAKAWAY 2-POINT LOCK, 5 OR 3 POSITION SWITCHES (DIGITAL 3 OR 5) OR KEY (5), OFF-EXIT ONLY-AUTO-REDUCED OPENING-HOLD OPEN DR OFF, AUTO, HOLD OPEN, MOTION/PRESENCE SENSORS. DUAL BEAMS ARE INCLUDED FOR PACKAGES WITH AN DFH GREATER THAN 12".
STANDARD FINISH: CLEAR- AA-M1C22A41, CLASS 1, .018 MM, DARK BRONZE- AA-M1C22A44, CLASS 1, .018 MM. SPECIAL FINISHES ARE AVAILABLE.

THIS PACKAGE WILL ACCEPT UP TO 1"(25.4) INSULATED GLASS. GLASS OVER 1/4" WILL REQUIRE THE HEADER TO BE SUPPORTED FROM ABOVE.

NOTE: DRAWING IS DIMENSIONED IN BOTH ENGLISH AND METRIC REF. AS FOLLOWS 1" (25.4) ALL METRIC SIZES ARE MILLIMETERS. FOR MAXIMUM CURRENT DRAW PER OPERATOR, SEE PRODUCT SPECIFICATION, INSTALLATION INSTRUCTIONS, OR THE UL LABEL ON THE EQUIPMENT.
REFER TO RELEVANT LOCAL, STATE, NATIONAL OR AHJ BUILDING CODE FOR MIN DOOR HEIGHT & MIN/MAX WIDTH ALLOWABLE FOR EGRESS REQUIREMENT IN CONJUNCTION WITH TABLE BELOW.

SL500 DHC	DOOR OPENING A	OVERALL FRAME WIDTH B	MASONRY OPENING WIDTH C	ACTIVE & SIDELITE LEAF WIDTH D & E
10'	59 3/16" (1503.4)	120" (3048)	120 1/2" (3060.7)	21 3/16" (538.2)
12'	75 3/16" (1909.8)	144" (3657.6)	144 1/2" (3670.3)	25 3/16" (639.8)
14'	91 3/16" (2316.2)	168" (4267.2)	168 1/2" (4279.5)	29 3/16" (741.4)
* 16'	107 3/16" (2722.6)	192" (4876.8)	192 1/2" (4889.5)	33 3/16" (843)
KEY	(2B/3)-20 13/16 (2B/3)-(528.6)	(C-1/2") (C-12.7)	(B+1/2") (B+12.7)	(B/6)+1 3/16" (B/6)+(30.2)
STD. GLASS SIZE KEY**	WIDTH - 'D' & 'D'	WIDTH - 'D' & 'D'		
	HEIGHT	HEIGHT		
	(B/6)-3 5/8"	(B/6)-3 5/8"		
	(B/6)-3 7/8"	(B/6)-3 7/8"		
	(B/6)-(98.43)	(B/6)-(98.43)		
	DFH-15 7/8"	DFH-15 7/8"		
	DFH-(403.2)	DFH-(403.2)		

* MAXIMUM DOWNWARD HEADER DEFLECTION IS .157" (4MM).
** NARROW STILE RAILS W/ 1/4" GUTTER, NO MUNTINS



DWG NO.	1010831
DRN BY	CLW
DATE	6/4/13
CHK BY	SS
DATE	6/4/13
REV	3.0
DATE	5/28/14