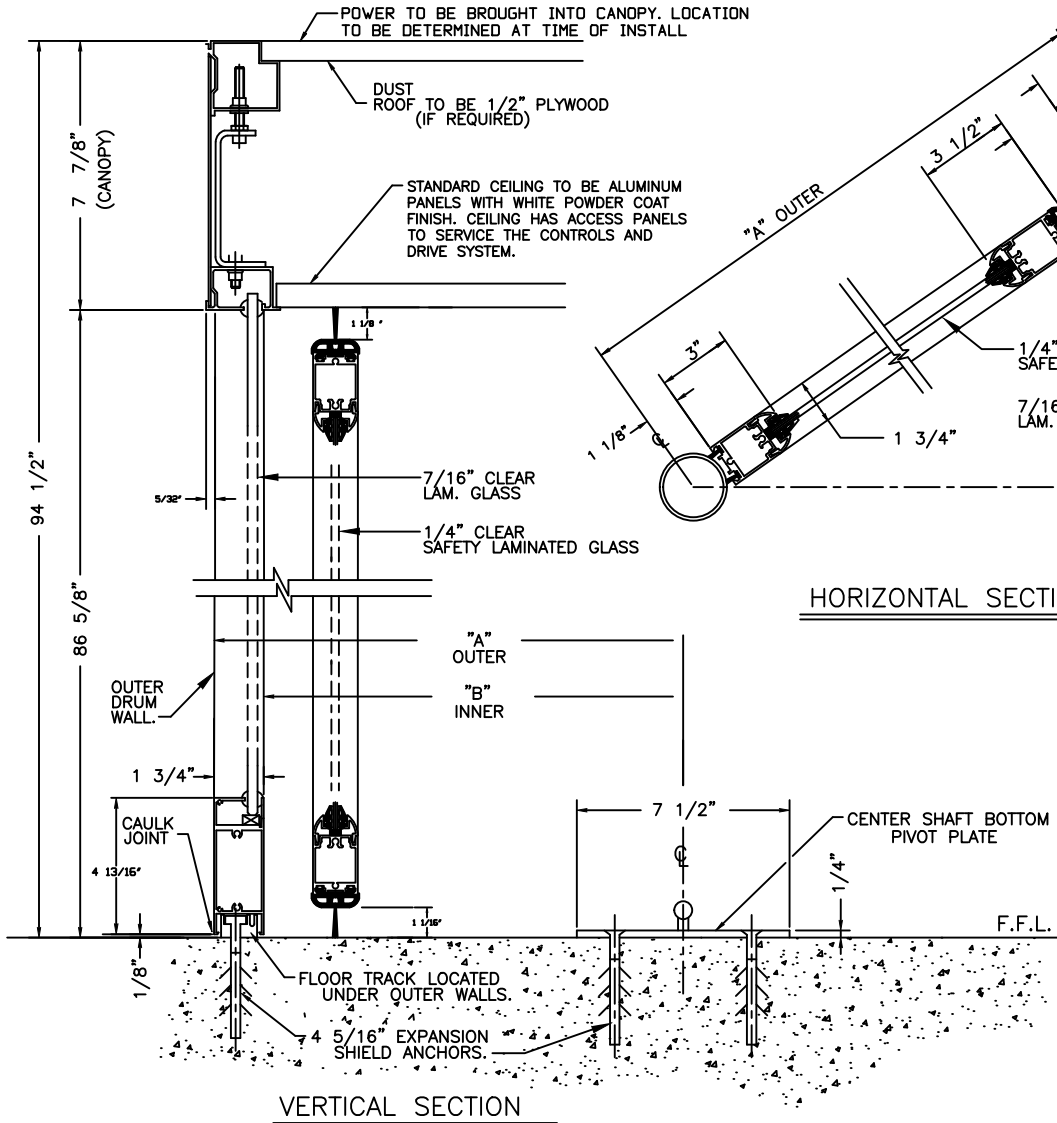


ASSA ABLOY

ASSA ABLOY Entrance Systems
1900 Airport Road
Honoroe, NC 28110
Phone: 1-866-237-2687
specdeskn.a.aes@assaabloy.com

ASSA ABLOY RD4-100 MANUAL
REVOLVING DOOR
DIAMETER
SECTION VIEW



MODEL #	OUTER RADIUS "A"	INNER RADIUS "B"	OVERALL FASCIA HEIGHT
RD4-100-6	37"	35 7/16"	94 1/2"
RD4-100-7	42 29/32"	41 11/32"	94 1/2"
RD4-100-8	48 13/16"	47 1/4"	94 1/2"

NOTE: FOR SPECIAL HEIGHT PACKAGES CONTACT FACTORY

NOTES
ALL CENTER SHAFT REVOLVING DOOR SYSTEMS SHOULD BE INSTALLED ON A LEVEL FLOOR SURFACE. WE REQUIRE THE FLOOR TO BE WITHIN 1/4" TOLERANCE ACROSS THE FOOTPRINT OF THE DOOR SYSTEM. ASSA ABLOY MD SERIES DOORS ARE DESIGNED TO MOUNT ON A FINISHED FLOOR SURFACE, THE FLOOR AREA SHOULD BE CAPABLE OF HANDLING WEIGHT LOADS OF 600 LBS AT THE CENTER OF THE DOOR (CENTER SHAFT CONNECTION) & 1000 LBS LOAD EVENLY DISTRIBUTED ACROSS THE OUTSIDE DRUM WALLS. ALL ASSA ABLOY DOOR SYSTEMS INCLUDE SPEED CONTROL SYSTEM.

GLAZING:
* 7/16" CLEAR CURVED SAFETY LAMINATED FOR FIXED OUTSIDE WALLS.
* 1/4" CLEAR SAFETY LAMINATED GLASS FOR ROTATING DOORS.

MATERIALS:
* ALL ALUMINUM PROFILES TO BE .125" THICK (NOMINAL THICKNESS).
* ALUMINUM EXTRUSION SYSTEM USED THROUGHOUT.
* ALL CURVED SECTIONS ARE STRETCH FORMED.
FINISHES: AS SPECIFIED
-- RAL POWDERCOAT PAINT.
-- #4 BRUSHED STAINLESS STEEL CLAD
-- #8 MIRRORRED STAINLESS STEEL CLAD
-- KYNAR PAINT # _____
-- OTHER _____

CEILING OPTIONS:
STANDARD - ALUMINUM WITH WHITE POWDER COAT FINISH
-- RAL COLOR POWDER COAT OPTIONS
-- CLEAR ANODIZED
-- BRUSHED AND POLISHED STAINLESS STEEL

POWER REQUIREMENTS:
* 110VAC. TO 240VAC., 20 AMP, 60 HZ DEDICATED CIRCUIT.

FEATURES:
* RETURN TO HOME SPEED CONTROL SYSTEM. THIS FEATURE WILL ROTATE THE DOORS AT A SLOW RATE OF SPEED TO POSITION THE DOOR WINGS AT THEIR PROPER RESTING POSITION. THIS REDUCES AIR INFILTRATION INTO THE BUILDING.
* SMART ASSIST FUNCTION TO REDUCE MANUAL PUSH FORCE FOR EASIER OPERATION

SECURITY:
* TWO MANUAL FLOOR LOCKS SUPPLIED.
OPTIONAL FEATURE:
* RECESSED CEILING LIGHTING, 6 EACH LED LIGHT FIXTURES.

DWG NO.	1018280-RD4-100 SECTION	SHEET	2	OF	2
DRN BY	M.H.W	DATE	10/4/13	CHK BY	DATE
			5/15/17	REV.	4.0
				DATE	9/15/2020

ASSA ABLOY RD4-100 MANUAL
REVOLVING DOOR
SECTION VIEW

ASSA ABLOY
ASSA ABLOY Entrance Systems
1900 Airport Road
Honoroe, NC 28110
Phone: 1-866-237-2687
specdeskn.a.aes@assaabloy.com