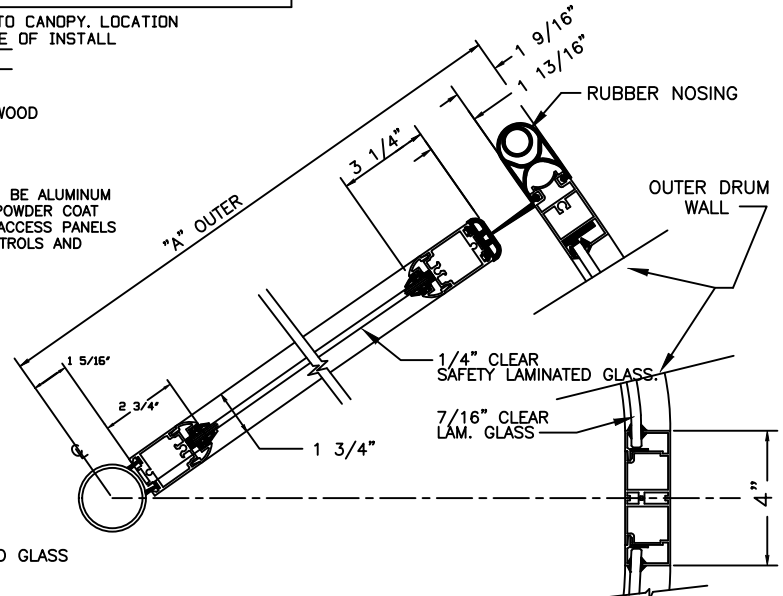
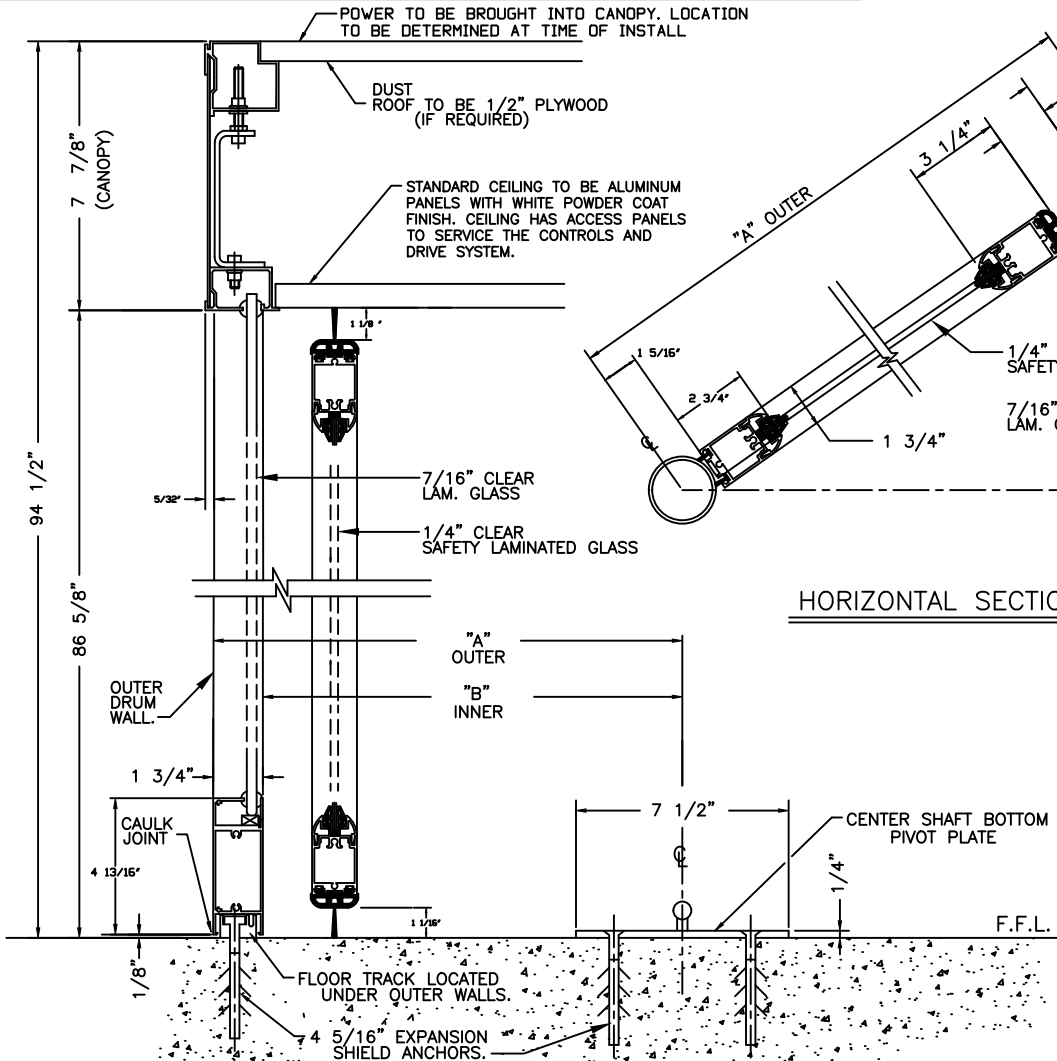


**ASSA ABLOY**

ASSA ABLOY Entrance Systems  
1900 Airport Road  
Honoroe, NC 28110  
Phone: 1-866-237-2687  
specdeskn.a.aes@assaabloy.com

ASSA ABLOY RD3-100 MANUAL  
REVOLVING DOOR  
DIAMETER  
SECTION VIEW



**VERTICAL SECTION**

**HORIZONTAL SECTION**

MODEL #	OUTER RADIUS "A"	INNER RADIUS "B"	OVERALL FASCIA HEIGHT
RD3-100-7	42 29/32"	41 11/32"	94 1/2"
RD3-100-8	48 13/16"	47 1/4"	94 1/2"

NOTE: FOR SPECIAL HEIGHT PACKAGES CONTACT FACTORY

**NOTES**  
ALL CENTER SHAFT REVOLVING DOOR SYSTEMS SHOULD BE INSTALLED ON A LEVEL FLOOR SURFACE. WE REQUIRE THE FLOOR TO BE WITHIN 1/4" TOLERANCE ACROSS THE FOOTPRINT OF THE DOOR SYSTEM.

ASSA ABLOY MD SERIES DOORS ARE DESIGNED TO MOUNT ON A FINISHED FLOOR SURFACE, THE FLOOR AREA SHOULD BE CAPABLE OF HANDLING WEIGHT LOADS OF 600 LBS THE CENTER OF THE DOOR (CENTER SHAFT CONNECTION) & 1000 LBS LOAD EVENLY DISTRIBUTED ACROSS THE OUTSIDE DRUM WALLS. ALL ASSA ABLOY DOOR SYSTEMS INCLUDE SPEED CONTROL SYSTEM.

**GLAZING:**

- \* 7/16" CLEAR CURVED SAFETY LAMINATED FOR FIXED OUTSIDE WALLS.
- \* 1/4" CLEAR SAFETY LAMINATED GLASS FOR ROTATING DOORS.

**MATERIALS:**

- \* ALL ALUMINUM PROFILES TO BE .125" THICK (NOMINAL THICKNESS).
- \* ALUMINUM EXTRUSION SYSTEM USED THROUGHOUT.
- \* ALL CURVED SECTIONS ARE STRETCH FORMED.

**FINISHES: AS SPECIFIED**

- RAL POWDERCOAT PAINT.
- #4 BRUSHED STAINLESS STEEL CLAD
- #8 MIRRORRED STAINLESS STEEL CLAD
- KYNAR PAINT # \_\_\_\_\_
- OTHER \_\_\_\_\_

**CEILING OPTIONS:**

- STANDARD - ALUMINUM WITH WHITE POWDER COAT FINISH
- RAL COLOR POWDER COAT OPTIONS
- CLEAR ANODIZED
- BRUSHED AND POLISHED STAINLESS STEEL

**POWER REQUIREMENTS:**

- \* 110VAC. TO 240VAC., 20 AMP, 60 HZ DEDICATED CIRCUIT.

**FEATURES:**

- \* RETURN TO HOME SPEED CONTROL SYSTEM. THIS FEATURE WILL ROTATE THE DOORS AT A SLOW RATE OF SPEED TO POSITION THE DOOR WINGS AT THEIR PROPER RESTING POSITION. THIS REDUCES AIR INFILTRATION INTO THE BUILDING.
- \* SMART ASSIST FUNCTION TO REDUCE MANUAL PUSH FORCE FOR EASIER OPERATION

**SECURITY:**

- \* TWO MANUAL FLOOR LOCKS SUPPLIED.
- OPTIONAL FEATURE:
- \* RECESSED CEILING LIGHTING, 6 EACH LED LIGHT FIXTURES.

DWG NO. 1018268-RD3-100 SECTION	SHEET 2	OF 2
DRN BY M.H.W	DATE 10/4/13	CHK BY DATE 5/15/17 REV. 4.0 DATE 9/11/20

ASSA ABLOY RD3-100 MANUAL  
REVOLVING DOOR  
SECTION VIEW

**ASSA ABLOY**

ASSA ABLOY Entrance Systems  
1900 Airport Road  
Honoroe, NC 28110  
Phone: 1-866-237-2687  
specdeskn.a.aes@assaabloy.com