

NOTES
ALL CENTER SHAFT REVOLVING DOOR SYSTEMS SHOULD BE INSTALLED ON A LEVEL FLOOR SURFACE. WE REQUIRE THE FLOOR TO BE WITHIN 1/4" TOLERANCE ACROSS THE FOOTPRINT OF THE DOOR SYSTEM. ASSA ABLOY MD SERIES DOORS ARE DESIGNED TO MOUNT ON A FINISHED FLOOR SURFACE, THE FLOOR AREA SHOULD BE CAPABLE OF HANDLING WEIGHT LOADS OF 600 LBS AT THE CENTER OF THE DOOR (CENTER SHAFT CONNECTION) & 1000 LBS LOAD EVENLY DISTRIBUTED ACROSS THE OUTSIDE DRUM WALLS. ALL ASSA ABLOY DOOR SYSTEMS INCLUDE SPEED CONTROL SYSTEM.
GLAZING:
* 7/16" CLEAR CURVED SAFETY LAMINATED FOR FIXED OUTSIDE WALLS.
* 1/4" CLEAR SAFETY LAMINATED GLASS FOR ROTATING DOORS.

MATERIALS:
* ALL ALUMINUM PROFILES TO BE .125" THICK (NOMINAL THICKNESS).
* ALUMINUM EXTRUSION SYSTEM USED THROUGHOUT.
* ALL CURVED SECTIONS ARE STRETCH FORMED.

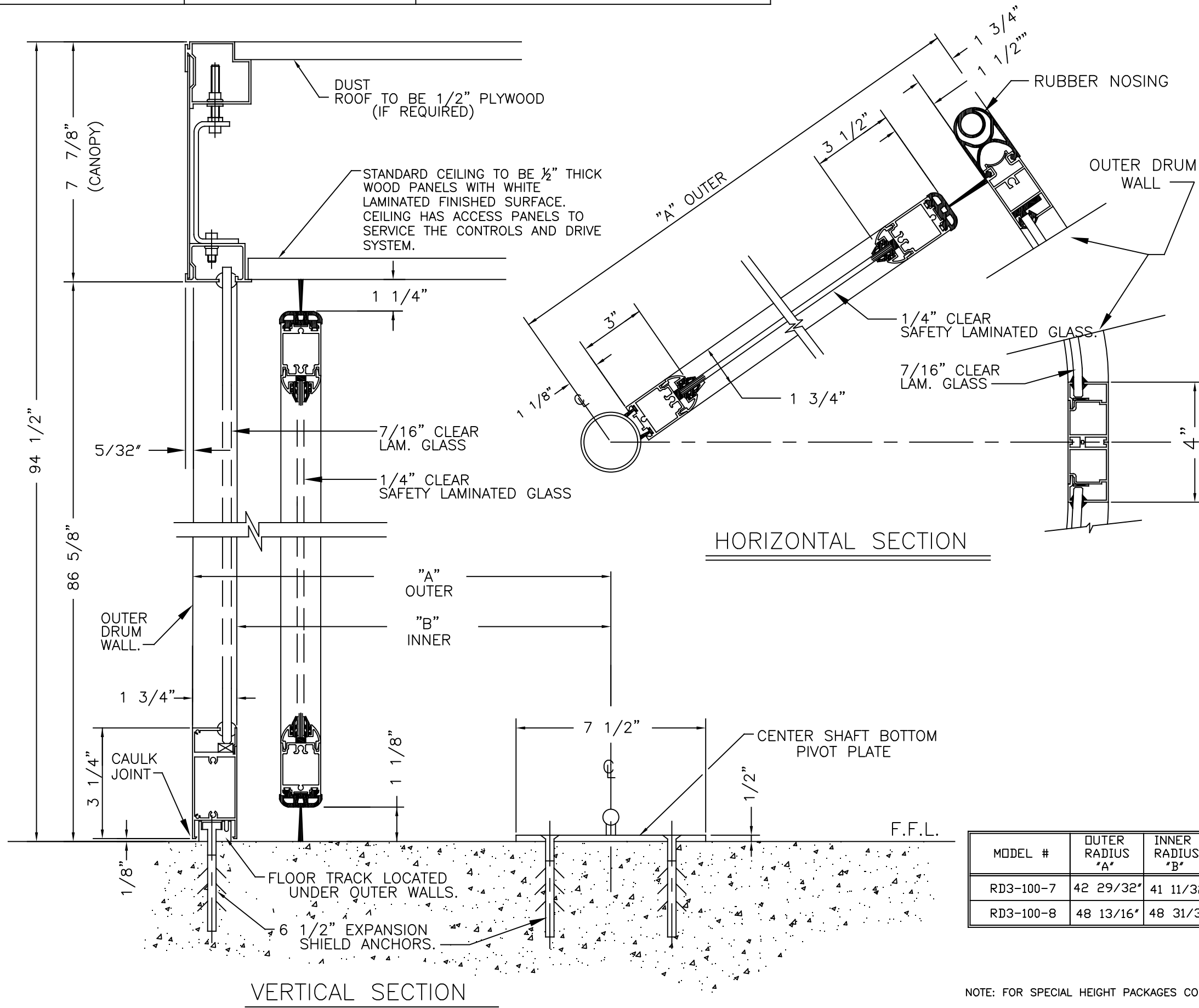
FINISHES: { AS SPECIFIED }
___ RAL POWDERCOAT PAINT.
___ #8 BRUSHED STAINLESS STEEL CLAD
___ #4 MIRRORED STAINLESS STEEL CLAD
___ KYNAR PAINT # _____
___ OTHER _____

CEILING OPTIONS:
STANDARD - WHITE MELAMINE LAMINATED
- COLOR LAMINATED
- IMITATION METAL LAMINATED MATCHING CLEAR ANODIZED BRUSHED STAINLESS STEEL

FEATURES:
* RETURN TO HOME SPEED CONTROL SYSTEM. THIS FEATURE WILL ROTATE THE DOORS AT A SLOW RATE OF

SPEED TO POSITION THE DOOR WINGS AT THEIR PROPER RESTING POSITION. THIS REDUCES AIR INFILTRATION INTO THE BUILDING.
* SMART ASSIST FUNCTION TO REDUCE MANUAL PUSH FORCE FOR EASIER OPERATION

SECURITY:
* TWO MANUAL FLOOR LOCKS SUPPLIED.
OPTIONAL FEATURE:
* RECESSED CEILING LIGHTING, 6 EACH LED LIGHT FIXTURES.



MODEL #	OUTER RADIUS "A"	INNER RADIUS "B"	OVERALL FASCIA HEIGHT
RD3-100-7	42 29/32"	41 11/32"	94 1/2"
RD3-100-8	48 13/16"	48 31/32"	94 1/2"

DWG NO. 1018268-RD3-100 SECTION	SHEET 2 OF 2
DRN BY M.H.W DATE 10/4/13	CHK BY DATE 5/15/17 REV. 1.0 DATE 5/3/18

ASSA ABLOY RD3-100 MANUAL
REVOLVING DOOR
SECTION VIEW

NOTE: FOR SPECIAL HEIGHT PACKAGES CONTACT FACTORY