

NOTES:

PACKAGE INCLUDES:
AUTOMATIC OPERATOR, DOORS, FRAMES, WEATHERSTRIPPING, FINGERGUARDS,
EMERGENCY BREAKAWAY, "3-POSITION" SWITCH (OFF - AUTO - HOLD OPEN),
"2-POINT" LOCK SYSTEM AND SENSOR SYSTEM PER YOUR SELECTION. SEE
I-ADAPT DRAWINGS 1010265 AND 1010266 FOR DETAILS ON SENSOR SYSTEM.

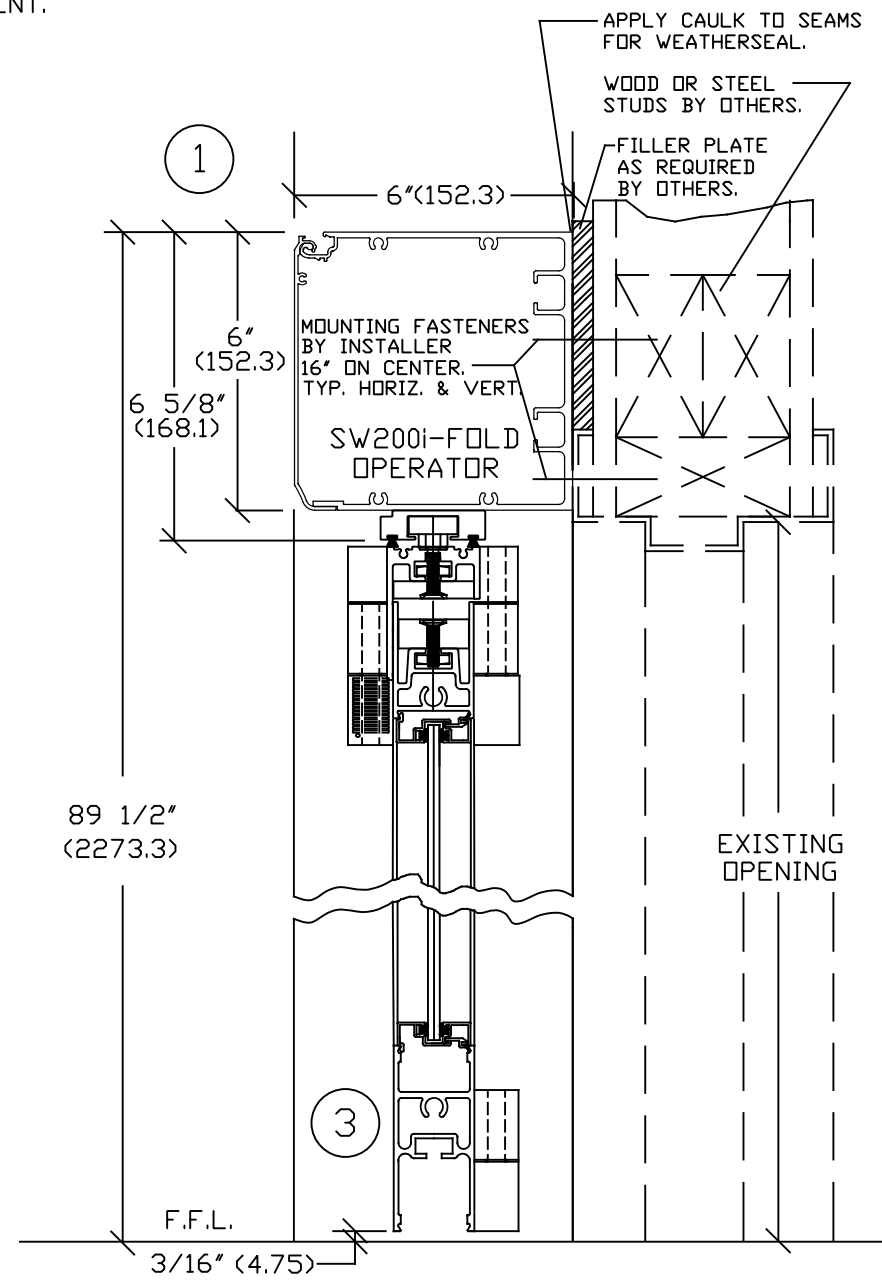
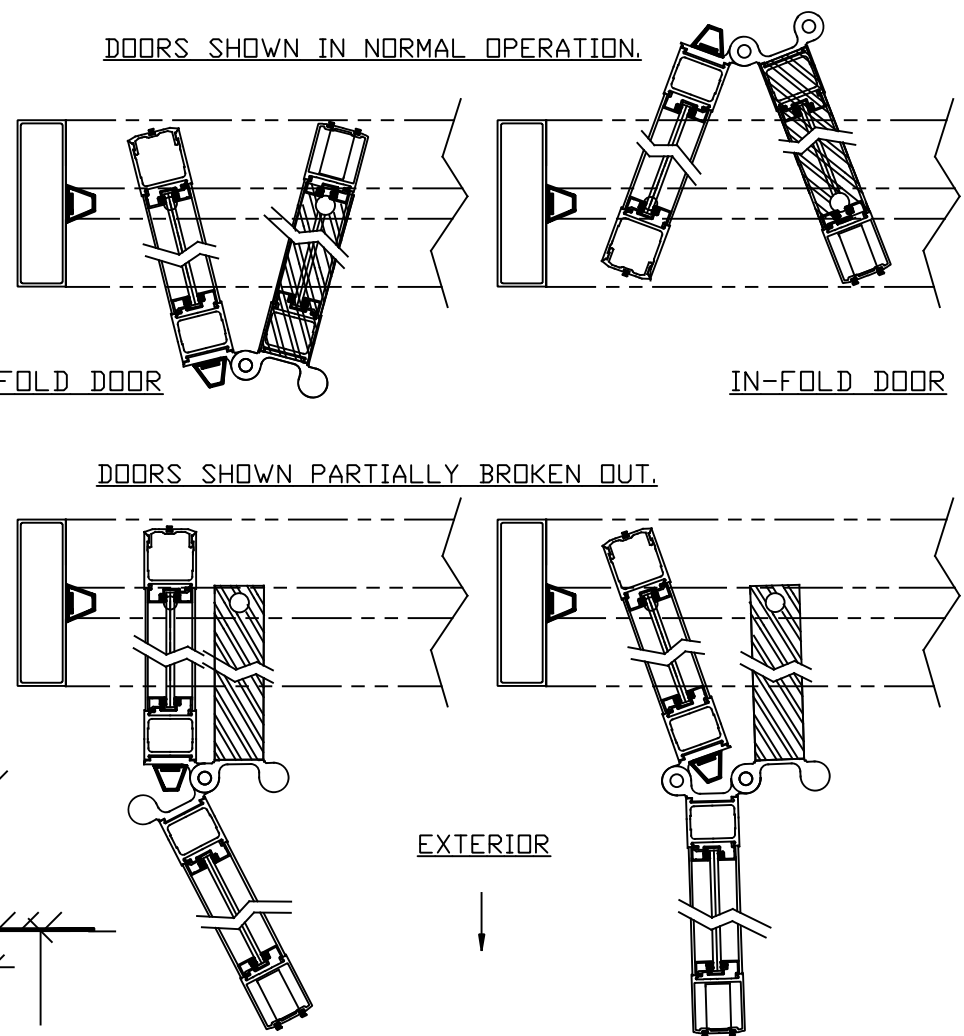
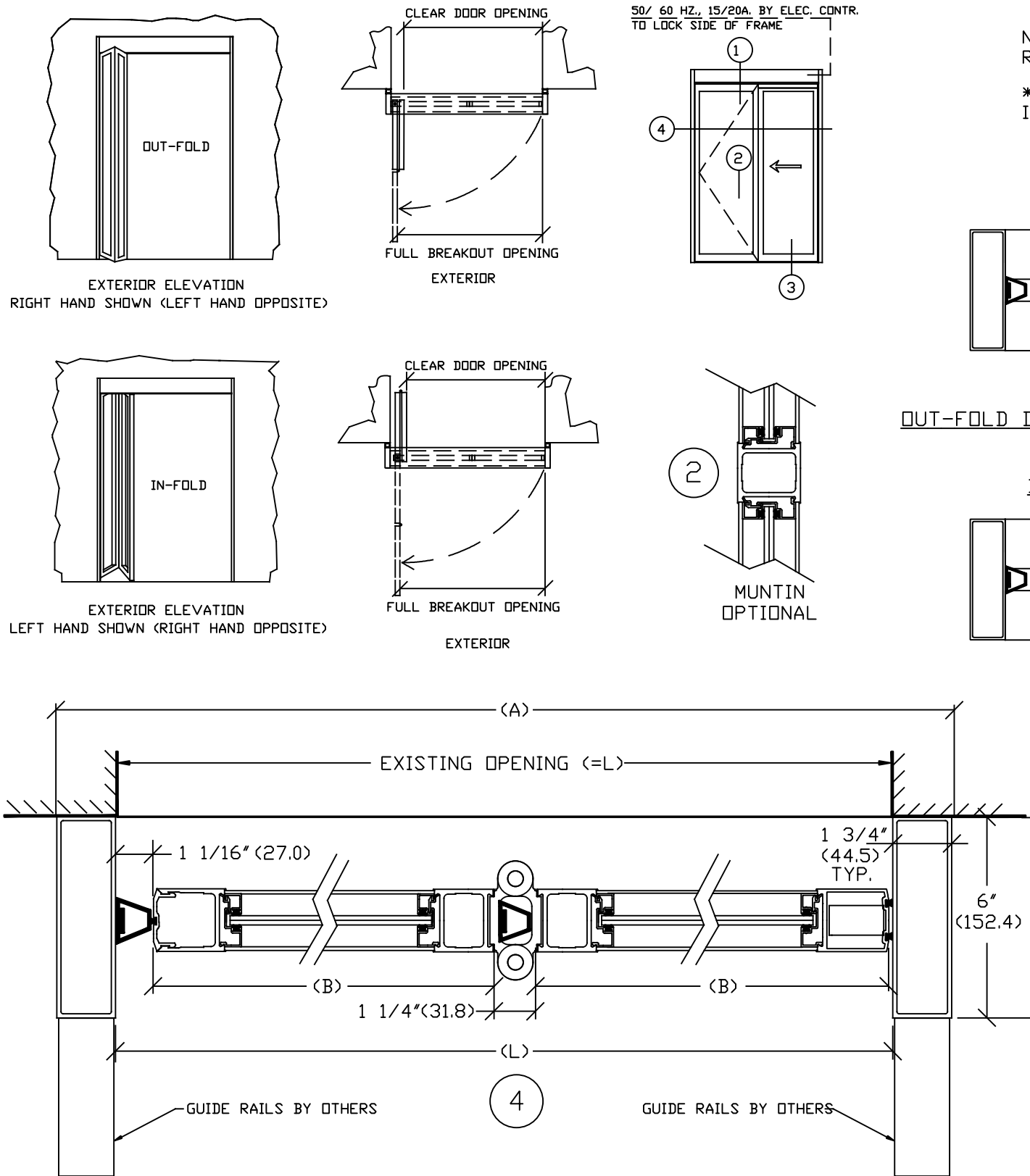
STANDARD FINISH:
CLEAR - AA-M12C22A41, CLASS 1, .018 MM.
DARK BRONZE - AA-M12C22A44, CLASS 1, .018 MM.
SPECIAL FINISHES ARE AVAILABLE

NOTE: OPERATIONAL ADJUSTMENTS TO BE
IN ACCORDANCE WITH CURRENT
ANSI/BHMA A156.10 FOR POWER
OPERATED PEDESTRIAN DOORS

* ELECTRICAL SERVICE 120VAC,
50/ 60 HZ., 15/20A. BY ELEC. CONTR.
TO LOCK SIDE OF FRAME

NOTE: DRAWING IS DIMENSIONED IN BOTH ENGLISH AND METRIC.
REF. AS FOLLOWS: 1" (25.4). ALL METRIC SIZES ARE IN MILLIMETERS.

* FOR MAXIMUM CURRENT DRAW PER OPERATOR, SEE PRODUCT SPECIFICATION,
INSTALLATION INSTRUCTIONS, OR THE UL LABEL ON THE EQUIPMENT.



PACKAGE DIMENSIONS

DFW (A)	DIM. (L)	LEAF (B)	CLEAR DOOR OPN.	BREAKOUT
3'-9 1/2" (1154.8)	3'-6" (1066.0)	19 25/32" (502.4)	33 1/4" (844.6)	37 1/4" (946.2)
4'-3 1/2" (1307.1)	4'-0" (1218.3)	22 25/32" (578.6)	39 1/4" (997)	43 1/4" (1098.6)
* 4'-9 1/2" (1460.5)	4'-6" (1371.6)	25 25/32" (654.8)	45 1/4" (1149.4)	49 1/4" (1251)
KEY:	DFW-3 1/2" (DFW-88.8)	L/2-1 7/32" (L/2-30.9)	L-8 3/4" (L-222.3)	L-4 3/4" (L-120.7)

* CHECK LOCAL CODE FOR BREAKOUT LEAF SIZES.

DWG NO. 1010757	DRN BY SS	DATE 4/22/13	CHK BY CW	DATE 4/22/13	REV. 3.0	DATE 1/18/18
-----------------	-----------	--------------	-----------	--------------	----------	--------------