

ASSA ABLOY

ASSA ABLOY Entrance Systems
 1900 Airport Road
 Morrisville, NC 28110
 Phone: 1-866-237-2687
 Speedsk@nc.assaabloy.com
 www.assaabloy.com

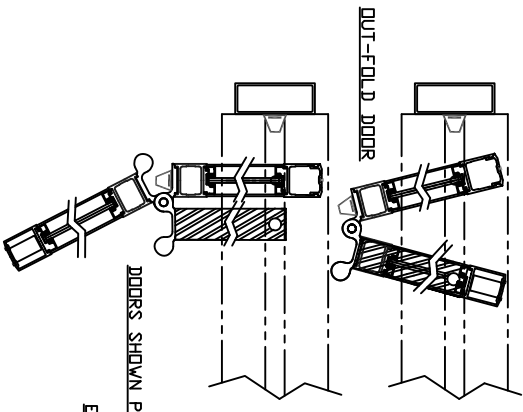
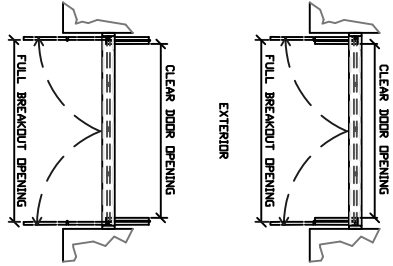
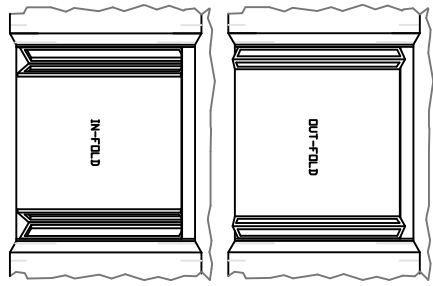
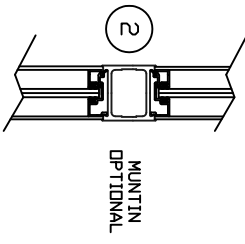
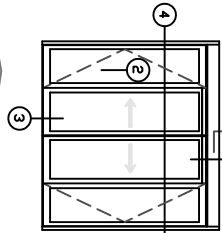
BESAM SW2001-FOLD WITH DOORS 4 PANEL CONCEALED FOLDING DOOR SYSTEM

NOTES:

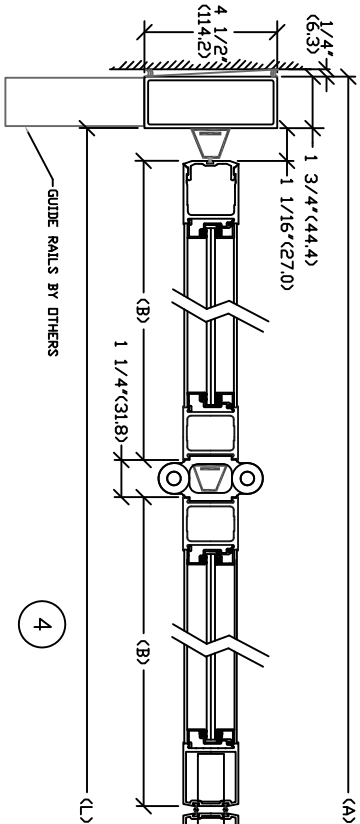
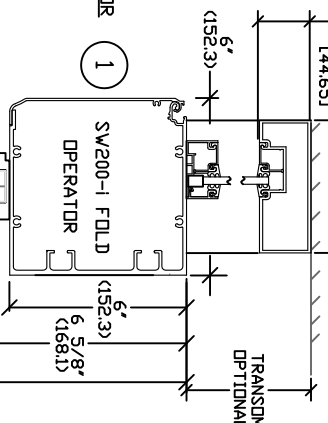
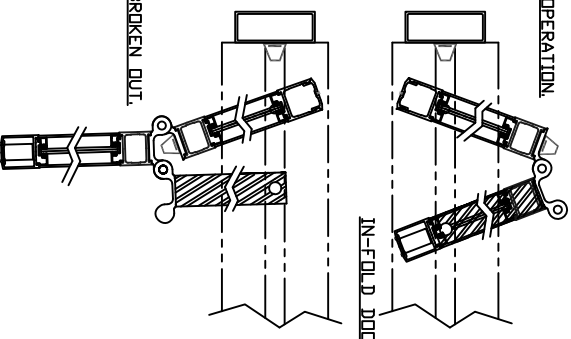
PACKAGE INCLUDES:
 AUTOMATIC OPERATOR, DOORS, FRAMES, WEATHERSTRIPPING, FINGERGUARDS,
 EMERGENCY BREAKAWAY, "3-POSITION" SWITCH (OFF - AUTO - HOLD OPEN),
 "3-POINT" LOCK SYSTEM AND SENSOR SYSTEM PER YOUR SELECTION. SEE
 1-ADAPT DRAWINGS 1010265 AND 1010266 FOR DETAILS ON SENSOR SYSTEM.

STANDARD FINISH:
 CLEAR - AA-M2C22A41, CLASS 1, .018 MM,
 DARK BRONZE - AA-M2C22A44, CLASS 1, .018 MM,
 SPECIAL FINISHES ARE AVAILABLE

NOTE: OPERATIONAL ADJUSTMENTS TO BE
 IN ACCORDANCE WITH CURRENT
 ANSI/BHMA A156.10 FOR POWER
 OPERATED PEDESTRIAN DOORS



DOORS SHOWN IN NORMAL OPERATION.
 DOORS SHOWN PARTIALLY BROKEN OUT.



DFV (A)	DIM (L)	LEAF (B)	CLEAR DOOR OPENING	BREAKOUT	MASONRY OPENING
6'-3 1/2" (193.0)	6'-0" (182.9)	16 25/32" (438.4)	34 1/2" (884.5)	62 1/2" (1587.5)	6'-4" X 7'-6 1/4" (193.0 X 2284.3)
7'-3 1/2" (223.8)	7'-0" (213.0)	19 45/32" (493.2)	38 1/2" (981.5)	66 1/2" (1681.5)	6'-4" X 7'-8 1/4" (193.0 X 2331.5)
8'-3 1/2" (253.8)	8'-0" (243.0)	22 35/32" (579.2)	42 1/2" (1081.5)	70 1/2" (1781.5)	6'-4" X 7'-6 1/4" (193.0 X 2284.3)
9'-3 1/2" (283.8)	9'-0" (273.0)	25 25/32" (646.5)	46 1/2" (1181.5)	74 1/2" (1901.5)	6'-4" X 7'-6 1/4" (193.0 X 2284.3)

DATE: 10/07/56
 DRAWN BY: SS
 CHECKED BY: CV
 DATE: 4/22/13
 REV: 2.0
 DATE: 5/30/14

ASSA ABLOY